

GARMIN®

2022-2023
ICE FISHING SERIES



CATCHING FISH BEATS DRILLING HOLES. WE'LL HELP YOU DO IT.

When the temperatures drop and the water's surface freezes, the fishing still can be great — as long as you have the right gear for finding the best spots to drill and fish. That's why you go with Garmin technology: fishfinders and chartplotter/sonar combos that clearly show you what's happening below. Forget the guesswork, the random ice drilling. If you want to spend more time angling than auguring, a Garmin ice fishing bundle or kit is the gear that gets results. Plus, when warmer weather returns, your sonar can easily transition to your boat for year-round fishing at its best.



GARMIN®



NEW

ECHOMAP™ UHD2 52cv ICE FISHING BUNDLE

Part no.: 010-02589-25

For the high-contrast imagery and mapping you need to locate the best fishing spots on ice, this affordable, portable 5" keyed chartplotter/sonar combo is just the ticket. It's bundled with a dual-beam ice fishing transducer that shows you crisp, clear fish arches with excellent target separation. The built-in flasher lets you see your jig and detects the depth of fish as they swim into the sonar beam. There's also support for ClearVü scanning sonar and its nearly photographic images of what's below the ice (transducer sold separately). You can create custom combination pages that show sonar, flasher and map views simultaneously on your display. There's also support for optional Garmin Navionics+™ and Garmin Navionics Vision+™ cartography. And the included Quickdraw Contours map drawing software that lets you save your own fishing maps with 1' contours.

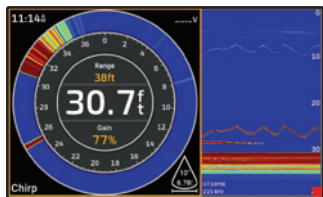
In addition to the ECHOMAP UHD2 52cv chartplotter and ice fishing transducer, this bundle comes with a 7Ah battery, charger, power cable, grommet and foam float — all in a convenient, glove-friendly carrying case.



5"

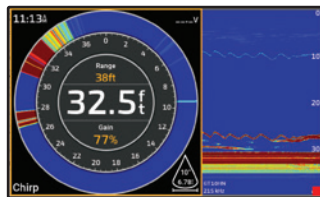
DUAL BEAM IF
TRANSDUCERSUPPORTS CLEARVÜ
SCANNING SONARCUSTOMIZABLE COMBO
SCREEN WITH BUILT-IN
FLASHEROPTIONAL GARMIN NAVIONICS+™
& GARMIN NAVIONICS+ VISION™
CHARTSBUILT-IN QUICKDRAW
CONTOURS

CHIRP TRADITIONAL



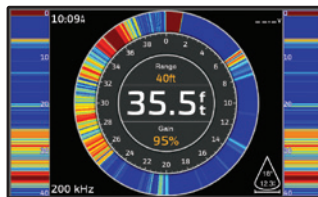
Crisp, clear CHIRP traditional sonar.

CUSTOMIZABLE COMBO SCREENS



Create custom combination pages that show sonar, flasher and map views simultaneously on your display.

BUILT-IN FLASHER



Built-in sonar flasher ensures precise jig and fish detection under the ice or on your boat.

QUICKDRAW CONTOURS MAPPING



Create and store maps as you fish with 1' contours for up to 2 million acres.

STRIKER™ VIVID 5cv ICE FISHING BUNDLE

Part no.: 010-02551-05

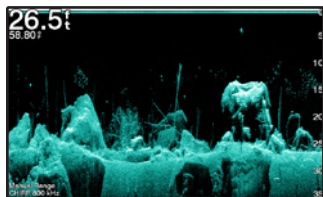


During the warm weather months, you can use this powerful STRIKER Vivid fishfinder on your boat to scout your favorite lakes, find the good spots and mark them with a GPS waypoint. Then when winter sets in, just follow the path created on your screen to cut right to the ice fishing chase. Choose from 7 new vivid colour options to see fish and structure in maximum contrast and clarity. This versatile bundle includes a Garmin high-wide CHIRP ice fishing transducer that gives you crystal-clear images with excellent target separation. And the built-in flasher shows your jig or weighted bait as well as the depth of fish swimming into the sonar beam. You can even watch your jig being lifted or dropped – and see whether fish are moving toward or away from it. Included Quickdraw Contours mapping software lets you create and store up to 2 million acres of maps with 1' contours. There's also support for ClearVü scanning sonar and its nearly photographic images of what's below the ice (transducer sold separately).

This STRIKER Vivid 5cv Ice Fishing Bundle includes the fishfinder, GT8HW-IF CHIRP ice fishing transducer, rechargeable 7Ah battery, charger, foam float, grommet and a portable carrying case for it all.

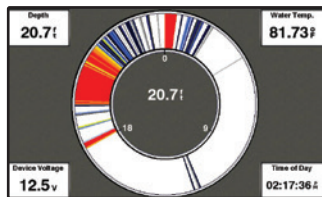
5" | INCLUDES HIGH-WIDE CHIRP TRANSDUCER | SUPPORTS CLEARVÜ SCANNING SONAR | BUILT-IN FLASHER | MARK WAYPOINTS, NAVIGATE WITH GPS | BUILT-IN QUICKDRAW CONTOURS

VIVID COLOUR OPTIONS



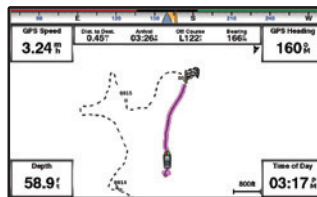
Choose from 7 new vivid colour options to see fish and structure in maximum contrast and clarity on your 5" fishfinder.

BUILT-IN FLASHER



Built-in sonar flasher ensures precise jig and fish detection under the ice or on your boat.

GPS NAVIGATION



Mark your best fishing spots with GPS waypoints, so you can return in summer or winter.

QUICKDRAW CONTOURS MAPPING



Create and store maps as you fish with 1' contours for up to 2 million acres.

STRIKER™ 4 PORTABLE BUNDLE

Part no.: 010-01550-11



STRIKER 4 fishfinder with portable carrying case is perfect for fishing from a kayak or canoe and is especially handy for ice fishing. Mark and return to your hot spots, boat ramps and docks. You can also share your favourite waypoints and routes with other STRIKER and echoMAP™ chartplotter combos. Smooth Scaling™ graphics provide uninterrupted imagery when switching between depth-range scales. Sonar history rewind allows you to scroll back through sonar images to mark waypoints you may have originally missed.

Includes the easy-to-use 3.5-inch colour fishfinder Striker 4, Dual-Beam CHIRP (77/200 kHz) transducer and a tilt/swivel mount, rechargeable 7Ah battery, charger, foam float, grommet and a portable carrying case for it all.

For high-performance CHIRP, purchase a GT8 or GT15 transducer (each sold separately).

>>
4"
<<

INCLUDES CHIRP
(77/200 KHZ) SONAR
TRANSDUCER

SUPPORTS HIGH
PERFORMANCE CHIRP
SONAR

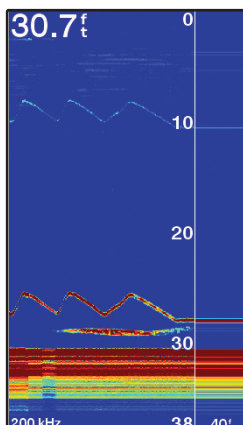
BUILT-IN FLASHER

MARK WAYPOINTS,
NAVIGATE WITH GPS

SPLIT-SCREEN
POSSIBILITIES

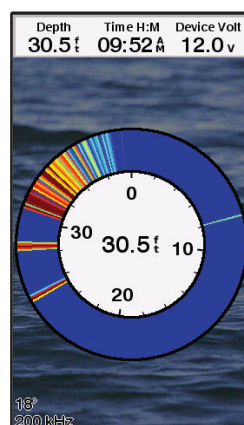
<<

CHIRP TRADITIONAL



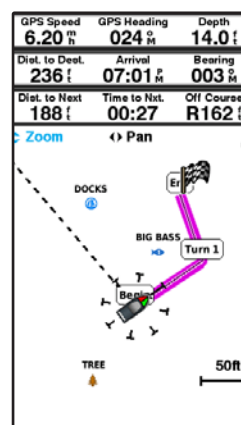
Crisp, clear CHIRP traditional sonar.

BUILT-IN FLASHER



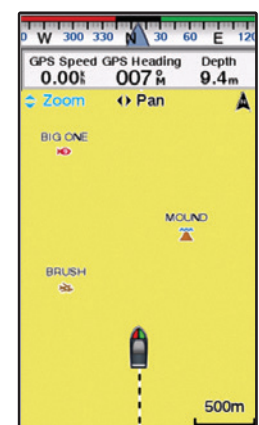
Built-in sonar flasher ensures precise jig and fish detection under the ice or on your boat.

GPS NAVIGATION



Mark your best fishing spots with GPS waypoints, so you can return in summer or winter.

QUICKDRAW CONTOURS MAPPING



Create and store maps as you fish with 1' contours for up to 2 million acres.

STRIKER™ PLUS 4 ICE FISHING BUNDLE

Part no.: 010-01870-31

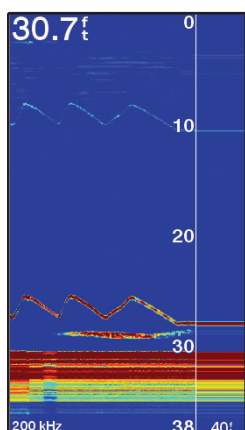


Anytime, anywhere you're ready to go fishing, the compact STRIKER Plus 4 bundle makes it easy to have a great outing. With its bright 4.3" display and intuitive user interface, you'll get a clear view of what's happening below the surface – whether you're fishing on ice or open water with Garmin GT20 CHIRP traditional and CHIRP ClearVü scanning sonar (transducer sold separately). The included dual-beam ice fishing transducer with Garmin traditional sonar gives crystal-clear images in shallow and deeper water with remarkable target separation. Plus, a built-in high-sensitivity GPS lets you mark the good spots with waypoints, so you can easily return to fish them again. Looking down through the ice, the fishfinder's A-scope flasher mode lets you select and view a real-time display of fish swimming into the sonar beam. Then when you transition to a boat for warm-weather fishing, GPS tracking lets you know how fast you're moving so you can be sure you're trolling at the right speed for the lure you're using or the environmental conditions you're dealing with.

This STRIKER Plus 4 ice fishing bundle includes the fishfinder, dual beam ice fishing transducer, rechargeable 7Ah battery, charger, foam float, grommet and a portable carrying case for it all.

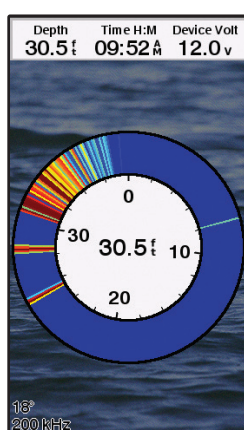
4" DISPLAY | INCLUDES DUAL BEAM-IF TRANSDUCER | SUPPORTS CLEARVÜ SCANNING SONAR | BUILT-IN FLASHER | MARK WAYPOINTS, NAVIGATE WITH GPS | BUILT-IN QUICKDRAW CONTOURS

CHIRP TRADITIONAL



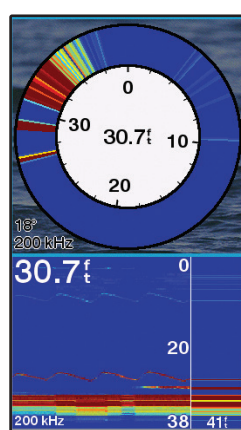
Crisp, clear CHIRP traditional sonar.

BUILT-IN FLASHER



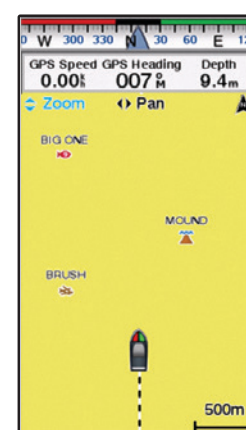
Built-in sonar flasher ensures precise jig and fish detection under the ice or on your boat.

CUSTOMIZABLE COMBO SCREENS



Create custom combination pages that show sonar, flasher and map views simultaneously on your display.

QUICKDRAW CONTOURS MAPPING



Create and store maps as you fish with 1' contours for up to 2 million acres.

ICE FISHING KITS

NEW

LIVESCOPE™ PLUS ICE FISHING KIT

With GLS10 and LVS34-IF Transducer

Part no.: 010-02706-31

Drill fewer holes and catch more fish with the LiveScope Plus ice fishing kit. It includes everything you need to take your ECHOMAP™ Plus/UHD unit from your boat onto the ice. Pair your device with the LiveScope Plus system and see clearer live sonar images with reduced noise and improved target separation. The rugged, portable carrying case fits your ECHOMAP™ 7" or 9" units or GPSMAP® 7" and 9" units. The kit includes a swivel pole mount for the LiveScope Plus transducer, a lead acid battery with charger and power cable — all with a rugged, glove-friendly carrying case.



LIVESCOPE™ ICE FISHING KIT

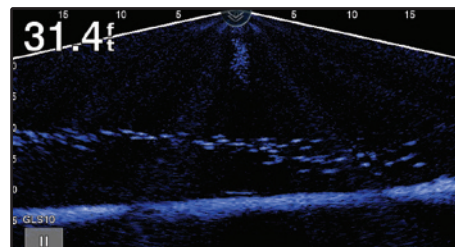
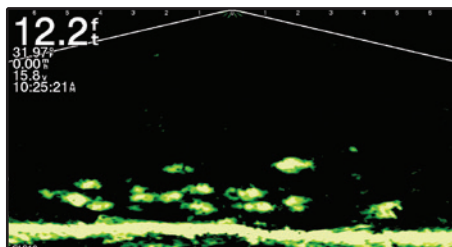
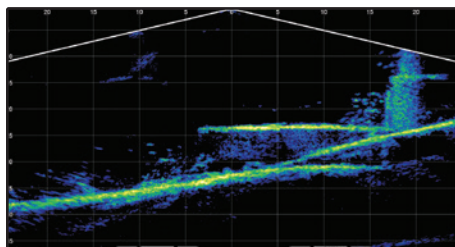
With GLS10 and LVS32-IF Transducer

Part no.: 010-12676-51

This kit includes everything you need to take your ECHOMAP™ Plus/UHD unit from your boat onto the ice. Pair your device with the Panoptix LiveScope system and see up to 200' in any direction with LiveScope™ Forward and LiveScope™ Down. The LiveScope kit can host up to the 10" ECHOMAP Ultra. The kit includes a swivel pole mount for the Panoptix™ transducer, a 12Ah battery with charger, power cable, grommet and foam float — all with a rugged, glove-friendly carrying case.

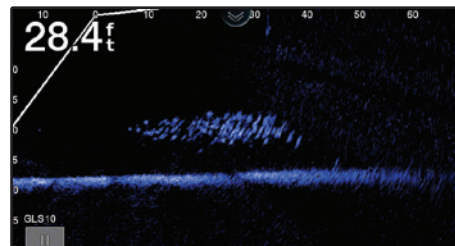
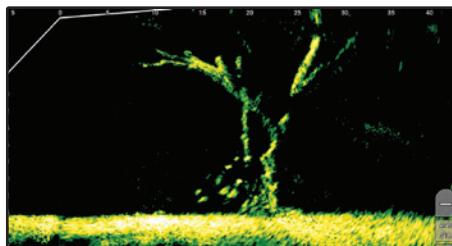
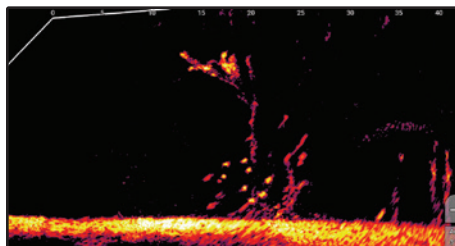


LIVESCOPE DOWN



Live, easy-to-interpret scanning sonar images of structure and swimming fish in incredible detail below the ice.

LIVESCOPE FORWARD



An excellent tool for scouting and fishing, it can show real-time scanning sonar images of structure and fish swimming all around below the ice.

PANOPTIX™ ICE FISHING KIT

With GT10HN-IF and PS22-TR Transducers

Part no.: 020-00293-04

This top-tier ice kit includes everything you need to take your 7" or 9" ECHOMAP Plus or UHD combo out for some frozen lake fishing. In addition to the Panoptix and CHIRP sonar transducers, the kit includes a swivel pole mount for the Panoptix transducer, a 12AH battery with charger, power cable, grommet and foam float – all with a rugged, glove-friendly carrying case.



LARGE PORTABLE ICE FISHING KIT

With GT10HN-IF Transducer

Part no.: 010-12676-01

It's a perfect fit for your larger Garmin STRIKER™ fishfinder or ECHOMAP™ Plus or UHD combo system. This ice fishing kit comes complete with a GT10HN-IF high-narrow CHIRP ice fishing transducer plus a glove-friendly bag to protect your devices. Also included are a foam float, grommet, battery with charger, power cable, and built-in cable management and storage.



PORTABLE FISHING KIT

With battery and suction cup transducer mount

Part no.: 010-12462-01

It's easy to take along your compatible STRIKER™ fishfinder echoMAP™ combos with this portable kit. It protects and carries your fishfinder and includes a sealed, rechargeable battery with smart charger, built-in transducer cable management and storage and suction cup transducer mount and float. Perfect for kayaking, canoeing, johnboating, docking or ice fishing.



ACCESSORIES

DUAL BEAM ICE FISHING TRANSDUCER

Part no.: 010-13069-00

Get crystal-clear images of fish from your spot on the ice. This transducer offers remarkable target separation, an operating frequency of 77/200 kHz and a beamwidth of 15 or 45 degrees — making it easier to see more. It features a silicone-coated cable that remains flexible in harsh winter conditions.



GT10HN-IF ICE FISHING TRANSDUCER

Part no.: 010-12677-00

Garmin ice fishing transducers provide crisp, clear and wide fish arches with excellent target separation. Choose the 4-pin, GT8HW-IF high-wide CHIRP ice fishing transducer for a larger coverage area.



GT8HW-IF ICE FISHING TRANSDUCER

Part no.: 010-11849-05

Garmin ice fishing transducers provide crisp, clear and wide fish arches with excellent target separation. Choose the 4-pin, Choose the 8-pin, GT10HN-IF high-narrow CHIRP transducer for precise jig and fish detection.



NEW

LIVESCOPE™ PLUS LVS34-IF TRANSDUCER

Part no.: 010-02706-20

Scan below the ice with improved resolution, reduced noise, clearer images and better target separation in LiveScope™ Forward and LiveScope™ Down modes. A durable, flexible cold-weather transducer cable is included.



LIVESCOPE™ LVS32-IF TRANSDUCER

Part no.: 010-12784-10

Drill fewer holes and catch more fish with the Panoptix LVS32-IF ice fishing transducer. Pair it with your compatible Garmin chartplotter via your GLS™ 10 sonar black box to see live, easy-to-interpret scanning sonar images in incredible detail below the ice.



EXTRA LARGE CARRY BAG AND BASE

Part no.: 010-12676-05

This is the big bag and base you'll need to carry your ECHOMAP™ Plus 92sv or Panoptix LiveScope™ combo system and all the various components that make up your ice fishing rig.



PANOPTIX™ ICE FISHING MOUNT

Part no.: 010-12676-10

This zero-degree tilt shaft pole mount allows you to rotate your Panoptix transducer, while under the ice, to locate fish around you.



12AH LEAD ACID BATTERY

Part no.: 010-12676-30

Keep reliable power flowing to your compatible Garmin ice fishing rig, even in seriously cold winter conditions, with this 12AH lead acid battery.



PANOPTIX LIVESCOPE™ BOAT KIT

Part no.: 020-00200-24

Get convenient year-round use from your Panoptix LiveScope ice fishing bundle with this easy-to-install boat kit, and take your LiveScope™ System out onto open water. The kit includes LiveScope shaft and barrel mounts, a power cable for the GLS™ 10 black box, a pair of Garmin Marine Network cables and cable coupler.



PANOPTIX LIVESCOPE™ /PS22 ALL-IN-ONE POWER CABLE

Part no.: 010-12676-40

Use this power cable to connect the Panoptix LiveScope System or Panoptix PS22 transducer and compatible chartplotter to the battery of your Panoptix ice fishing bundle.



PANOPTIX™ POWER CABLE

Part no.: 010-12676-35

All-in-one power cable makes it easy to connect your Panoptix transducer and chartplotter to battery power for ice fishing. Compatible with the Panoptix Ice Fishing Bundle and Panoptix Ice Fishing Kit.





PRODUCTS

BUNDLES:

| | |
|---|--------------|
| ECHOMAP UHD2 52cv Ice Fishing Bundle | 010-02589-25 |
| Striker Vivid 5cv, Portable Ice Fishing Bundle w/GT8HW-IF | 010-02551-05 |
| Striker Plus 4, Portable Ice Fishing Kit w/ Dual Beam -IF | 010-01870-31 |
| Striker 4, Portable Fishing Bundle | 010-01550-11 |

KITS:

| | |
|--------------------------------|--------------|
| LiveScope Plus Ice Fishing Kit | 010-02706-31 |
| LiveScope Ice Fishing Kit | 010-12676-51 |
| Panoptix Ice Fishing Kit, EU | 020-00293-04 |
| Large Portable Ice Fishing Kit | 010-12676-01 |
| Portable Fishing Kit | 010-12462-01 |

TRANSDUCERS:

| | |
|--|--------------|
| LiveScope Plus LVS34-IF, xdcr only | 010-02706-20 |
| LiveScope LVS32-IF, xdcr only | 010-12784-10 |
| PS-22 Panoptix Transducer | 010-01945-00 |
| GT10HN-IF Ice Transducer – 8-pin – 7-16° Cone Angle | 010-12677-00 |
| GT8HW-IF Ice Transducer – 4-pin – 16-24° Cone Angle | 010-12401-20 |
| Dual Beam Ice Transducer – 4-pin – 15-45° Cone Angle | 010-13069-00 |

ACCESSORIES:

| | |
|--|--------------|
| LiveScope Boat Kit: Shaft/Barrel Mount, Power Cbl, Network Cbl | 020-00200-24 |
| Extra-large Portable Kit Bag, Base and Handle | 010-12676-05 |
| Panoptix Ice Pole Mount | 010-12676-10 |

POWER CABLES/BATTERY:

| | |
|---|--------------|
| 12 AH Lead Acid Battery | 010-12676-30 |
| Power Cable, Portable kit, PS22 / ECHOMAP / STRIKER | 010-12676-35 |
| Power Cable, Portable kit, LiveScope / PS22 / ECHOMAP / STRIKER | 010-12676-40 |
| Portable kit, Battery Charger, EU | 010-11849-04 |

CABLE ADAPTORS:

| | |
|---|--------------|
| 4-pin Transducer to 12-pin Sounder – GT8 to 7X/9XSV | 010-12718-00 |
| 8-pin Transducer to 4-pin Sounder – GT10 to STRIKER/6X/4X | 010-12719-00 |
| 4-pin Transducer to 8-pin Sounder – GT8 to 7X/9XCV | 010-12721-00 |
| 8-pin Transducer to 12-pin Sounder – GT10 to 7X/9XSV | 010-12122-10 |

